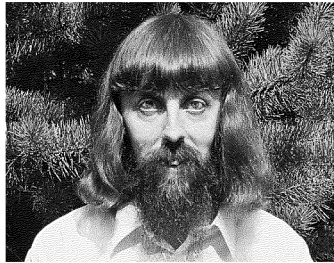


ОЛИТВА О

УТИНЕ



БАК

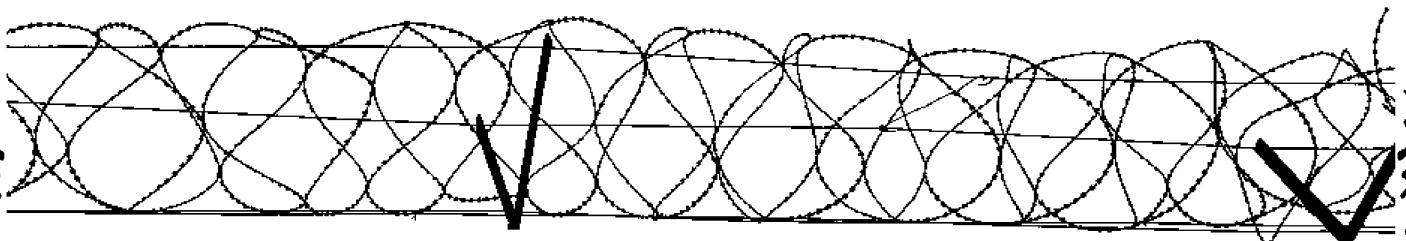
БАКЯН

1 **М**а-ра, взгляни на растлење во-круг, власть прости--ту-ток, бан--ди-тов, ха-пуг!

Musical score for the first system, including a vocal line and piano accompaniment.

3 Пу--ти-ну грозный Свой лик по-ка-жи; нравам раз-вра--та ко-нец по-ло--жи;

Musical score for the second system, including a vocal line and piano accompaniment.



5

суд над ре--жи-мом е---го со-вер-ши!

Пу-тин пра-ва че-ло--ве--ка по-прал!

Musical score for the first system, measures 5-6. The vocal line is in a treble clef with a key signature of one flat (B-flat). The piano accompaniment consists of two staves: a treble staff with chords and a bass staff with a simple bass line. The music is in a 4/4 time signature.

7

Мыс-ли и сло---ва сво-бо--ду у--крал!

Да-же сво-бо--ду соб-ра-ний за-брал!

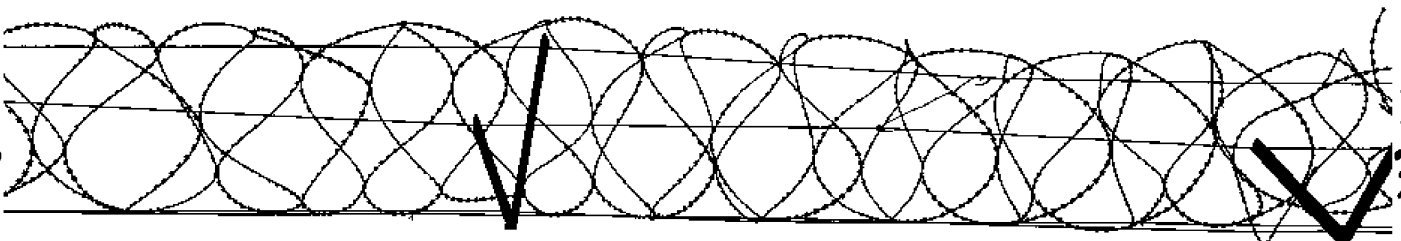
Musical score for the second system, measures 7-8. The vocal line continues in the same treble clef and key signature. The piano accompaniment follows the same structure as the first system, with chords in the treble and a bass line in the bass staff.

9

С братским на--ро-дом вой-ну раз-вя-зал!

Ма-ра кра-са--ви-ца, но--чи бо--ги---ня,

Musical score for the third system, measures 9-10. The vocal line continues in the same treble clef and key signature. The piano accompaniment follows the same structure as the previous systems, with chords in the treble and a bass line in the bass staff.



11

мо--ря, ту--ма-на, ре--ки бе--ре--ги---ня! Пу-ти-ну грозный Свой лик по-ка-жи;

Musical score for system 11, measures 11-12. The vocal line is in a treble clef with a key signature of one sharp (F#). The piano accompaniment consists of two staves: a treble staff with a key signature of one sharp and a bass staff with a key signature of one flat (Bb). The music is in a 3/4 time signature.

13

пра-вам растлень-я ко--нец по-ло--жи; суд над ре--жи-мом е---го со-вер-ши!

Musical score for system 13, measures 13-14. The vocal line is in a treble clef with a key signature of one sharp (F#). The piano accompaniment consists of two staves: a treble staff with a key signature of one sharp and a bass staff with a key signature of one flat (Bb). The music is in a 3/4 time signature.

15

Суд над ре-жи-мом е--го со-вер-ши! Суд над ре-жи-мом е--го со--вер----ши!

Musical score for system 15, measures 15-16. The vocal line is in a treble clef with a key signature of one sharp (F#). The piano accompaniment consists of two staves: a treble staff with a key signature of one sharp and a bass staff with a key signature of one flat (Bb). The music is in a 3/4 time signature.

